



TechSlitter

Duplex slitter

TechSlitter CHRO

Technical Data

Materials LIB-Aluminium, LIB-Copper	Parent reel diameters 1,000 · 2,000 mm	Slitting widths ≥ 200 mm
Material thickness 5 - 50 µm	Finished reel diameters 850 mm	Winding cores 3" · 6"
Material widths 1,400 · 1,700 mm	Finished reel weights max. 2,000 kg	Machine speed max. 800 m/min
Slitting systems Blade cut · scissor cut · driven burst cut		

Precise.
A definite strength
of the TechSlitter.



Wide range of equipment options.

- Flexible unwinder design (core / mill spool)
- Flexible modular design for hard foil, soft foil or LIB foil
- Pinhole detection system
- Surface inspection system
- Integration of thickness measurement
- Slitting unit with different slitting solutions
- Slitting dust suction system
- Various handling systems for loading and unloading
- Edge trim suction system
- Industry 4.0 with the@vanced

Engineered for Best Quality.

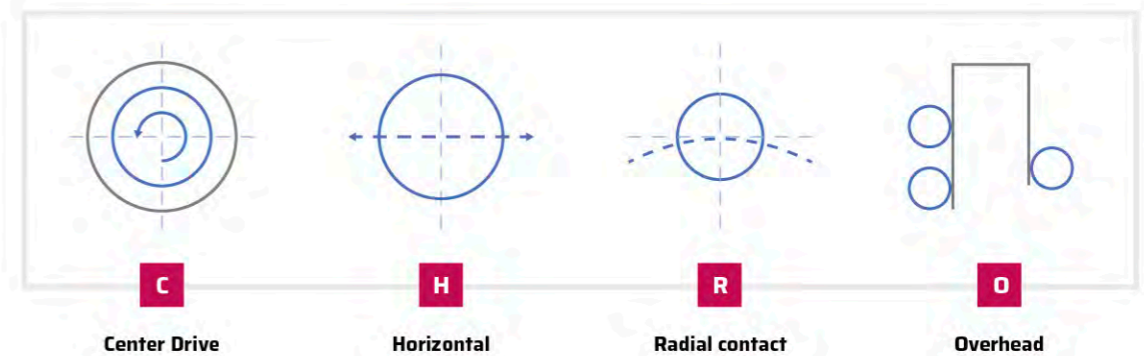
The slitting and winding of ultra-thin foil, net foil, especially LI-Battery foil, is one of the most demanding and challenging tasks in the foil manufacturing process.

The TechSlitter, with special configuration of slitting and detection of the foil, meets all necessary requirements. It is the perfect machine for manufacturing LI-Battery foil.

Depending upon the required quality demands, the TechSlitter can be adapted and equipped to individual customer needs. It offers the integration of various inspection systems, such as pinhole detection and surface inspection. The newly developed slitting system is perfectly adapted to the very highest quality requirements of the slitting edge for LI-Battery foil.

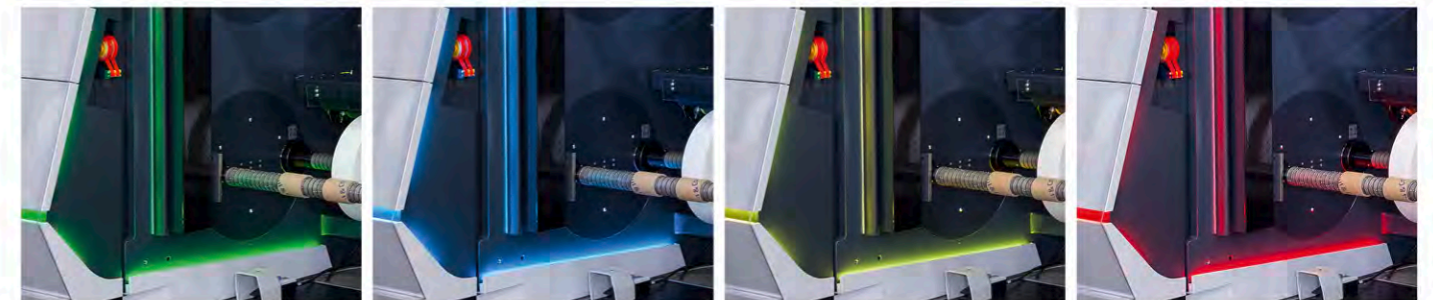
The TechSlitter is the logical development of the Kampf slitting machines for foil. On a proven modern platform, the modular design and various options allow the highest slitting quality requirements to be met.

- Hard and Soft Aluminium Foil
- Lithium-Ion Battery Aluminium Foil
- Lithium-Ion Battery Copper Foil



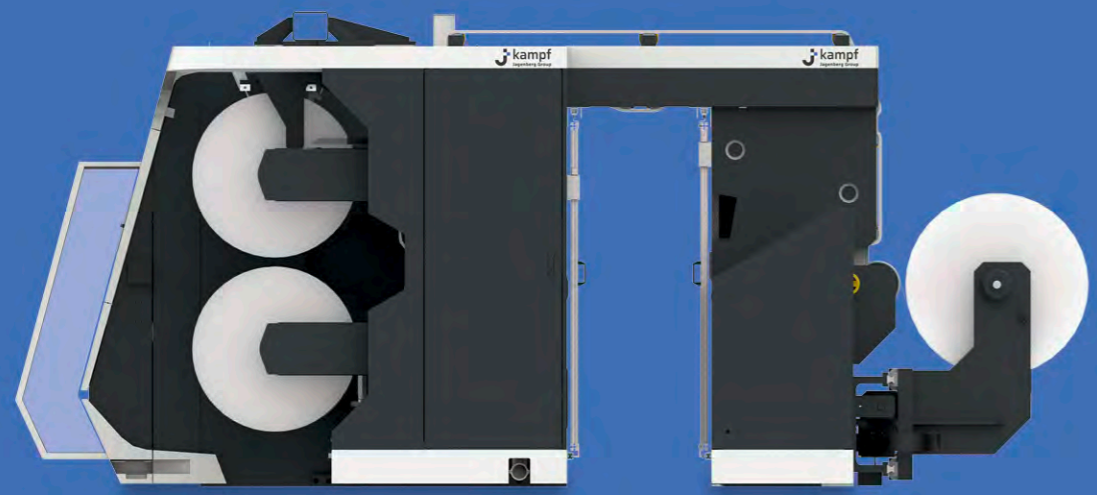
Improved awareness brings more security into your everyday life. An intelligent lighting concept communicates the current status of the machine. By changing the color of the illumination according to the situation, you

can monitor this in the direct surrounding the machines as well as from a distance. With the other newly designed and fully integrated safety devices, you always have an overview, even from a safe distance.



Safety rethought. Occupational safety with perspective.

TechSlitter - with Core Unwinder



Look and Feel.

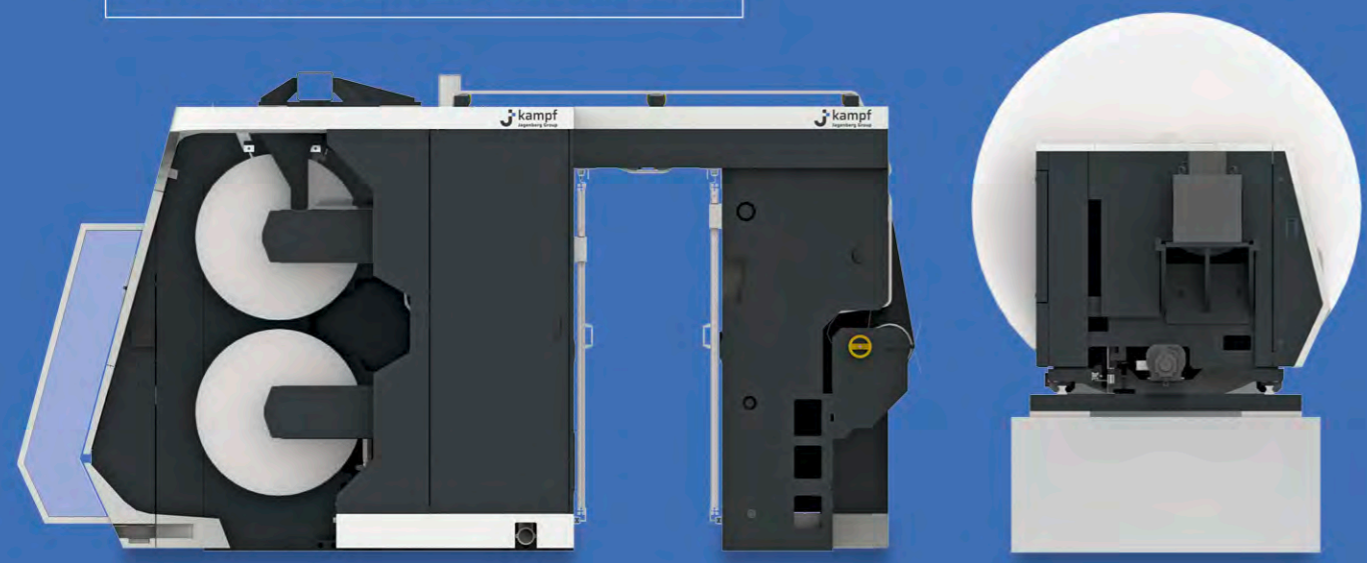
OPERATING COMFORT IN A NEW DESIGN.

Simplified machine operation, optimum accessibility and integrated safety are combined by a completely new design and colour concept.

The re-designed operation concept considers a complete new Human Machine Interface (HMI). This includes a new level of forward looking information, newly designed workspaces, as well as future oriented handling and digitization solutions.

The TechSlitter provides state-of-the-art Siemens control systems, combined with precise individual drive technology and advanced web control features. All integrated into a concept of proven mechanical engineering and without any hydraulic functions.

TechSlitter - with Mill Spool Unwinder

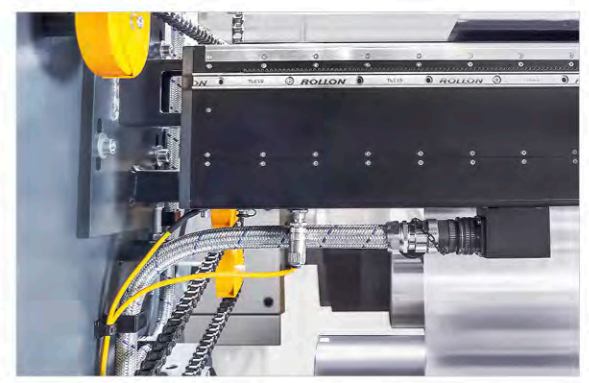


A modular system.

OPTIONS SUITABLE FOR YOUR APPLICATION



Unwind Handling for Mill Spools



Integration of Pinhole Detection Systems



Web Path Overhead



Semi-Automated Slitter Positioning System



Slitting Dust Removal System and Driven Burst Cut System



Rewind Handling

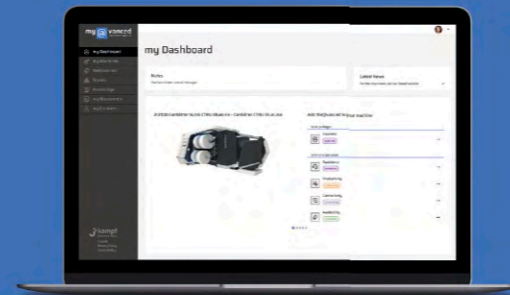
DIGITAL CUSTOMER SOLUTIONS

The digital **customer portal my@vanced** and the **integrative platform the@vanced** make change accessible: with digital collaboration, intelligent production, and continuous evolution of know-how.

Connecting
people.
Integrating
machines.

my @ vanced
customer portal

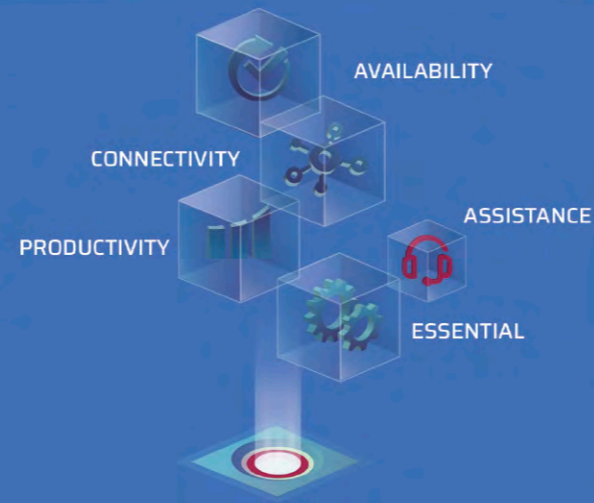
my@vanced is our **digital customer portal**:
Up-to-date information, practical knowledge, easy spares identification, online shop, and the certainty to have all necessary information in one place – at any time.



NEXT GENERATION
PRODUCTION

the @ vanced
integrative platform

the@vanced is our digital integrative platform. It connects value chain systems in the field of webshaped materials processing. With the **five packages Essential, Assistance, Availability, Productivity and Connectivity** it allows scalable solutions from using our **Remote Service** to a full integration into existing **MES or ERP systems**.



Visit our website for more information:
www.kampf.de/digital-customer-solutions



Your partners worldwide

Germany

Kampf GmbH

Mühlener Straße 36-42 • 51674 Wiehl

fon +49 2262 81-0

info@kampf.de

www.kampf.de

United Kingdom

Atlas Converting Equipment Ltd.

8 Wolsley Road, Woburn Road Industrial Estate

Kempston • Bedford, MK42 7XT

fon +44 1234 852553

sales@atlasconverting.com

service@atlasconverting.com

www.atlasconverting.com

USA

Kampf Machinery Corporation

Kennedy Technology Center

900 River Street, Unit H • Windsor, CT-06095

fon +1 860 640 0040 • info@kampfusa.com

www.kampfusa.com

Atlas Converting North America, Inc.

9801-F Southern Pine Boulevard • Charlotte, NC 28273

fon +1 704 587 2450

sales.usa@atlasconverting.com

service.usa@atlasconverting.com

www.atlasconverting.com

China - Hong Kong

Kampf (Hong Kong) Co. Ltd.

Room 803, 8/F • Wanchai Commercial Centre

194-204 Johnston Road, Wanchai • Hong Kong

fon +852 2882 1136

kampfhk@kampf.com.hk

China - Shanghai

Kampf Machinery (Shanghai) Co. Ltd.

302-304, Floor 3 • No. 8, Sunnyworld Center

Lane 1518, South Yumin Road

Jiading District • 201801 Shanghai

fon +86 21 5951 8030

kampf@kampf-cn.com

India

Kampf Machinery India Pvt. Ltd.

413, fourth floor, Atlantis Heights Sarabhai

Compound, Near Genda Circle • 390007 Vadodara, Gujarat

fon +91 962 404 4922

service@kampf-india.com

Kampf Machinery India Pvt. Ltd.

Office no. 1121, Tower no. A, Plot No. A-40, ITHUM Building

Sector-62 • 201309 Noida, Uttar Pradesh

fon +91 96240 89896

sales@kampf-india.com